



MICE

Tokyo & Osaka



Hankyu-Hanshin-Daiichi Hotel Group

Table of Contents

04	Four reasons for Hankyu Hanshin Hotels
05	In the heart of Tokyo
08	Dai-ichi Hotel Tokyo
09	Remm Hotels
11	In the heart of Osaka
14	Hotel Hankyu International
15	Hotel Hankyu GRAN RESPIRE OSAKA
16	Hotel Hankyu RESPIRE OSAKA
17	Hotel Hanshin Osaka
19	Takarazuka Hotel

A woman with long dark hair, wearing a red dress and black shoes, stands on a rooftop terrace with a glass railing, looking out over a vast cityscape under a clear blue sky. The city below is densely packed with buildings and greenery, stretching towards the horizon.

**A goal without
a plan
is just a wish.**

Antoine de Saint-Exupéry

Plan with us
&
let us make your event great

Four reasons for Hankyu Hanshin Hotels



Space for your ideas

Concentrated on the main business cities Tokyo and Osaka, we offer a large number of banquet Halls and meeting spaces (totally 7471 m² event space, 2448 guest rooms).
For small social gatherings, business meetings or larger exhibitions and conferences.



MICE Know-How

In our division specializing on MICE we offer you assistance in your planning process.
Our group holding is also specialized in the sectors:

- entertainment (Takarazuka Revue)
- sports (Hanshin Tigers baseball team)
- travel (Hankyu Travel International)
- shopping (Hankyu Hanshin Department Stores)
- railway (Hankyu Railway & Hanshin Electric Railway)



Sustainability

In our SDGs department we are taking action every day to reach our goals for sustainability and a better environment for the future.



Tradition & Hospitality

Based on more than 90 years of history and 39 hotels, the Hankyu Hanshin Daiichi Hotel Group is one of the leading hotel chain operators in Japan.

..in the heart of Tokyo

With a total of 39 hotels the Hankyu Hanshin Daiichi Hotel Group is one of the leading hotel operators in Japan. (17 hotels directly operated, 22 hotels under franchise management)

Our hotels are located all over Japan between Kagoshima in the south and Yamagata in the north, mainly concentrated on the hotspots Tokyo and Osaka.

In Tokyo you can find our elegant MICE flagship Dai-ichi Hotel Tokyo since 1938 and five hotels of our directly operated lifestyle hotel sub-brand “remm” right in the center of Tokyo with the shortest access to the nearest train stations. While Dai-ichi Hotel Tokyo is famous for its MICE facilities, high-grade service and VIP floor, the “remm” brand focuses on your best sleep & relax experience.



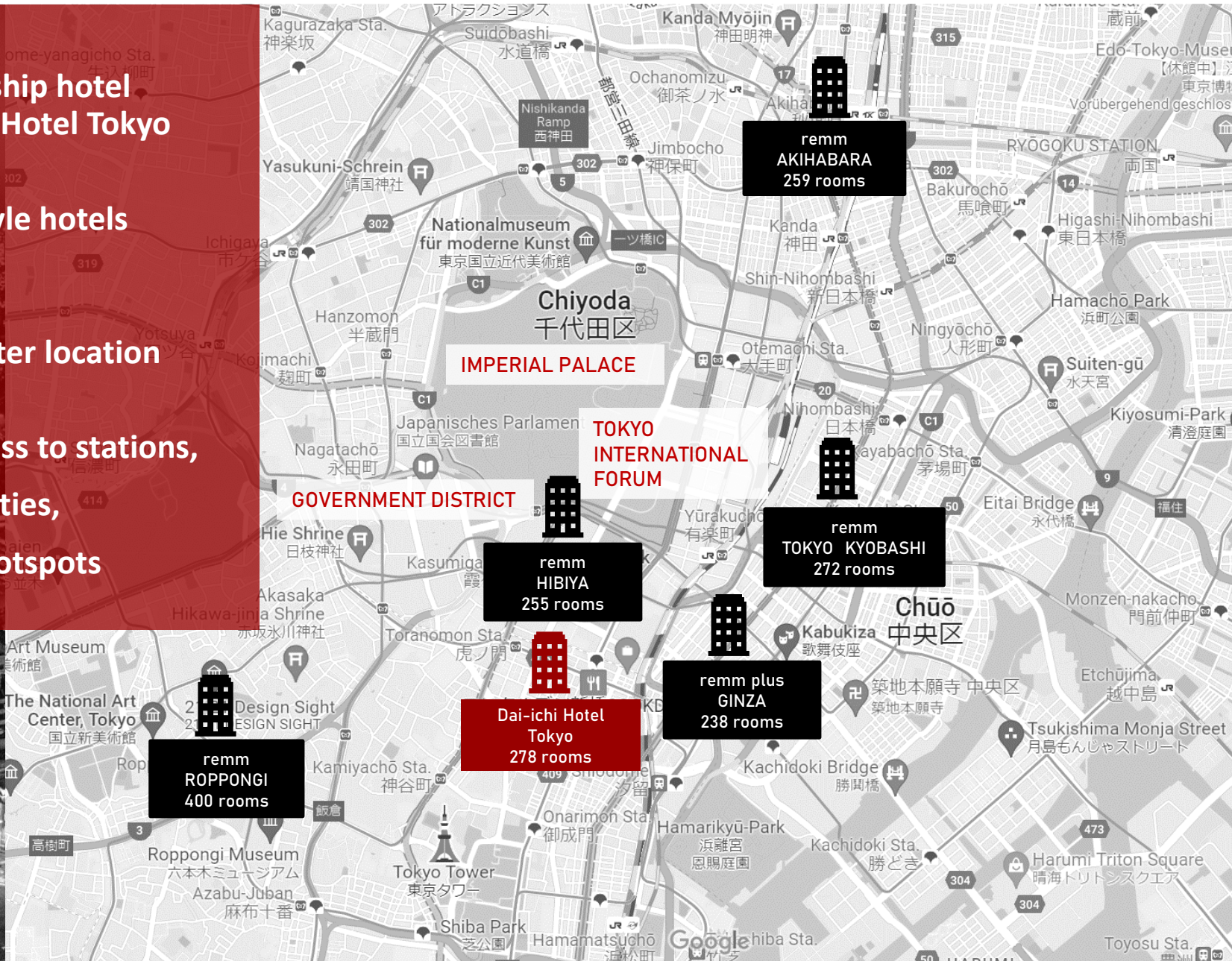


TOKYO

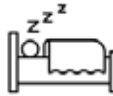
...city of contrasts



- MICE flagship hotel
Dai-ichi Hotel Tokyo
- Five lifestyle hotels
remm
- Tokyo center location
- Close access to stations,
MICE facilities,
touristic hotspots



Dai-ichi Hotel Tokyo



278 guest rooms
VIP floor



8 meeting rooms



10 restaurants & bar

Elegance & Excellence

The Hankyu-Hanshin-Daiichi Hotel Group's flagship hotel is situated in Shimbashi which boasts the great access as the main area of Tokyo. It prides itself on its luxuriousness and dignity, cultivated with the long history since 1938. Guests can enjoy its high-grade service with a VIP floor.



Narita International Airport
Haneda International Airport

120 min by airport limousine bus

60 min by airport limousine bus



Shimbashi station

2 min walk



...and many more hotels for your best access stay in Tokyo, “Remm Hotels”



GINZA

remm plus Ginza
238 guest rooms



TOKYO KYOBASHI

remm Tokyo Kyobashi
272 guest rooms



HIBIYA

remm Hibiya
255 guest rooms

total
1424
remm
guest rooms



AKIHABARA

remm Akihabara
259 guest rooms



ROPPONGI

remm Roppongi
400 guest rooms

five really cool things to do around your hotel in Shimbashi...

1.



Party like a local

Experience the lively nightlife of Shimbashi, and join the local businessman after work for a drink or two with a train ratteling over you in one of the famous bars under the bridge of Shimbashi.

2.

Tamiya Plamodel Factory

In the middle of Shimbashi and just some minutes walk from your hotel, you can find a fine and small shop with a great variety of all the Tamiya products your heart desires. Also great as souvenirs for modeller fans.

3.



Shop till you drop

Ginza is just a 10 min walk away and famous for one of world's most expensive store rents. You can enjoy luxury brand boutique stores but also a 12 stores high store of the beloved Japanese budget brand Uniqlo. Ginza is as well home to 200 art galleries, theaters and cinemas.

4.



City Oasis

Take a green break from the fast pace of the city. Hibiya Park was designed as the first westernized park and opened in 1903 as a pioneer modern city park. Enjoy seasonal flowers and plants all year round like cherry blossoms or red autumn leaves.

5.



What a view !

Enjoy the ride and the spectacular view from the fully automized Yurikamome line between Shimbashi and Toyosu. It will take you in between skyscrapers, the Rainbow Bridge and the famous giant Unicorn Gundam statue at Odaiba.

... in the heart of Osaka

Growing originally from the Hankyu and Hanshin railway networks linking the Kansai economic centers Osaka, Kobe and Kyoto, the group companies developed department stores, hotels, and entertainment facilities (including the Takarazuka Grand Theater and Hanshin Koshien baseball stadium) along the rail lines from the early 20th century onward.

Now also a builder and operator of shopping and office complexes to serve the diverse needs of contemporary Kansai, Hankyu Hanshin Holdings Group remains an important driver of community development along its rail lines.

The Holdings Group covers real estate, urban transportation, travel, hotels, information technology and international transportation.

our MICE hotels

The image is a collage of various Osaka street scenes. On the left, there are close-up shots of colorful neon signs, including one with a blue and white wave pattern and another with large black Japanese characters. The center features a semi-transparent overlay with the word 'OSAKA' in a large, bold, black serif font, flanked by two horizontal lines. Below this, the text '...city to rumble' is written in a smaller, bold, black serif font. The background of the overlay shows a blurred street scene with the pink and white tower of the Abeno Harukas building in the distance. On the right, there are more street scenes with various signs, including one for '串かつ' (skewers) for 90 yen, a sign for '南本通り商店街' (Nankon-dori Shopping Street) featuring a cartoon character, and a sign for 'くら寿司' (Kura Sushi). The overall atmosphere is vibrant and bustling, typical of a major Japanese city at night.

OSAKA

...city to rumble



- Osaka Umeda, in the heart of Kansai, Western Japan

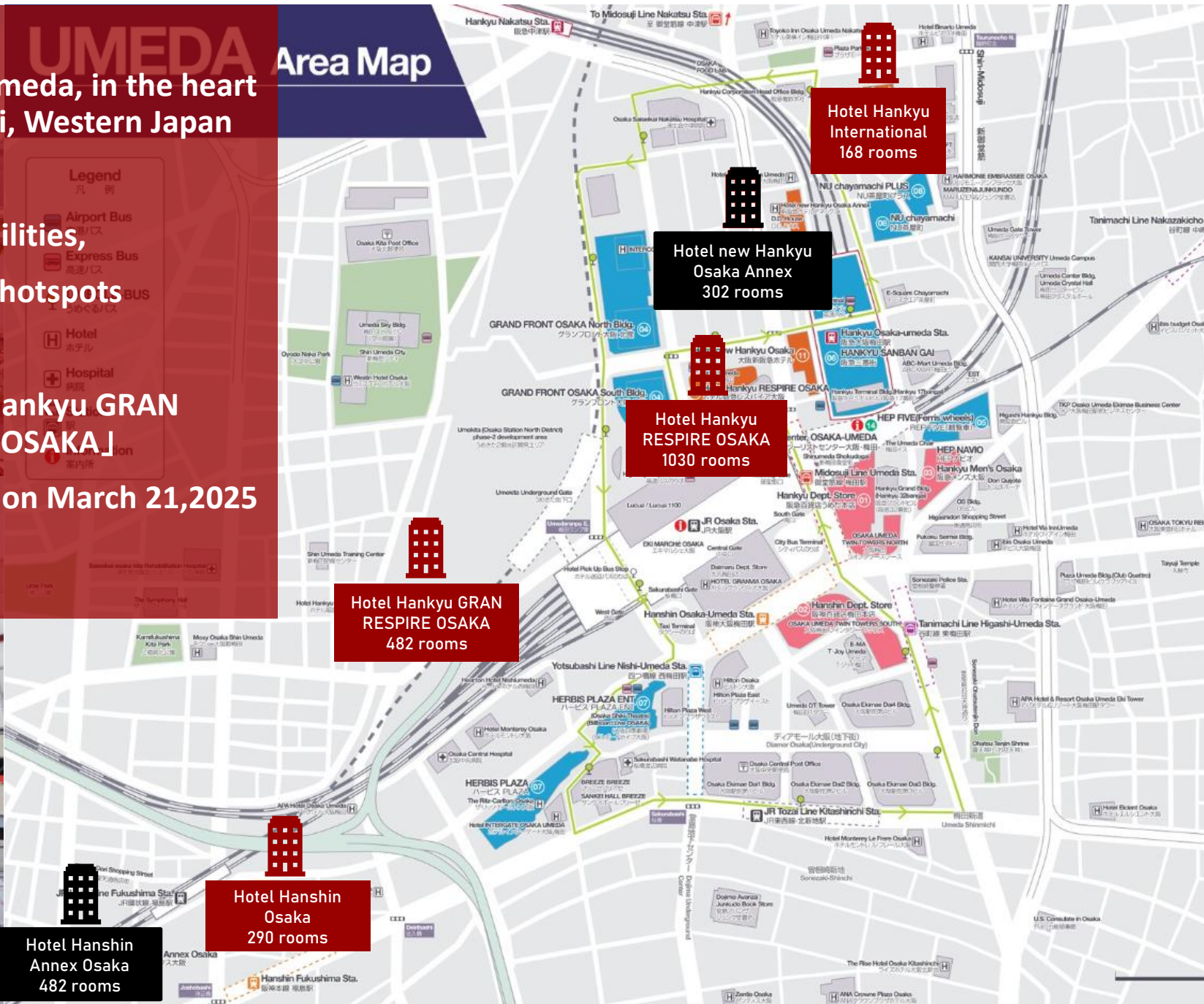
- MICE facilities, touristic hotspots

- 「Hotel Hankyu GRAN RESPIRE OSAKA」
Opening on March 21, 2025

UMEDA Area Map

Legend

- Airport Bus
- Express Bus
- BUS
- Hotel
- Hospital
- Station



Hotel Hankyu International



168 guest rooms
VIP floor



13 meeting rooms



10 restaurants & bar

Superior Quality

The luxurious hotel is conveniently located in the bustling retail and commercial district of Umeda in Osaka City.

The hotel's design concept is based on the luxurious mansions of old Europe and this is reflected in the sumptuous hotel decor. It gives each guest room the same qualities of a suite.



Kansai International Airport
Osaka International Airport

70 min by airport limousine bus

30 min by airport limousine bus

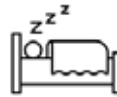


Osaka Umeda station

3 min walk



Hotel Hankyu GRAN RESPIRE OSAKA



482 guest rooms
VIP floor



1 restaurant

The next level of Urban Relaxation

Conveniently located as a base for business and tourism, once you step into the hotel, you will find yourself surrounded by a natural and relaxing space, making you forget you are in the city. We will also add features inside the hotel so guests can enjoy the charm of Japan and Osaka's unique character.



Kansai International Airport
Osaka International Airport

75 min by airport limousine bus

30 min by airport limousine bus

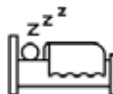


Osaka station

5 min walk



Hotel Hankyu RESPIRE OSAKA



1030 guest rooms



1 meeting room



1 restaurant

Rest and Inspire

RESPIRE combines the meanings of the words "rest," as in to take rest, and "inspire," as in to have one's senses stimulated and be filled with vitality and RESPIRE also means "to breathe." We offer a place where you can rest and be revitalized for tomorrow, giving the sensation of having taken a deep breath of fresh air.



Kansai International Airport
Osaka International Airport

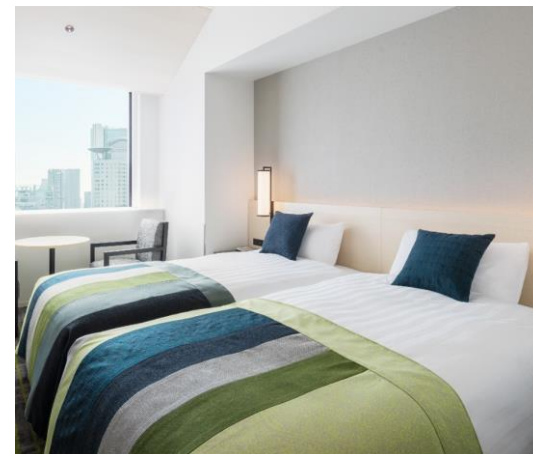
75 min by airport limousine bus

30 min by airport limousine bus

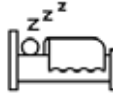


Osaka Umeda station

5 min walk



Hotel Hanshin Osaka



290 guest rooms



8 meeting rooms



6 restaurants & bar

Natural hot spring and spa

Enjoy the relaxing natural hot spring even in the middle of busy Osaka! The hotel features spa facilities and hot spring water in each room helping you to relax after a hard day of work.

Hotel Hanshin Osaka is located in front of Hanshin and JR Fukushima Station with good access next to Umeda Station and in walking distance to Osaka International Convention Center.



Kansai International Airport
Osaka International Airport

70 min by airport limousine bus
30 min by airport limousine bus



Fukushima station

1 min walk



five really cool things to do around your hotels in Osaka...

1.



Climb high

The 40 stories high (173m) Umeda Sky Building is the center of Shin-Umeda district and one of the most famous landmarks of Osaka.

The famous donut-shaped aerial garden observation platform connects the twin towers East and West.

2.

Kyoto culture & history

If you have a little extra time: just by a 45 minutes train ride from your hotel's close station Osaka Umeda you can get yourself to Kyoto, which is of course the city to visit to experience traditional Japan.

3.



Place for Foodies

At Hanshin Department Umeda Main Store the B1 floor is definitely the place you don't want to miss as a food lover, as you can find all kinds of yummy food and local souvenirs. In Umeda also many other of our original stores like Hankyu Department Store are located as well. So come hungry!

4.



Take a historical ride

The Hankyu Railway connects the three cities Kyoto, Kobe and Osaka. The traditional maroon color has remained unchanged since its opening in 1910 for more than 100 years.

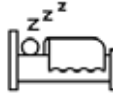
5.



Kobe - city in between

Just a 35 minutes train ride away from your closest station Osaka Umeda, you can again experience a different side of Japan in the harbour city Kobe. It is beautifully located between sea and mountains and has once been one of the rare doors to Japan's overseas trade. And of course not to mention: the famous Kobe beef is a must!

Takarazuka Hotel



200 guest rooms



9 meeting rooms



4 restaurants & bar

Unique Hotel Experience

The Takarazuka Grand Theater's only official hotel is four minutes' walk from Hankyu Railway Takarazuka Station. The hotel also features a Takarazuka Revue-themed exhibit, and you can enjoy the Takarazuka Revue atmosphere. For your MICE events the outdoor rooftop terrace can be connected to the banquet halls.



Kansai International Airport
Osaka International Airport

110 min by train

30 min by train



Takarazuka station

4 min walk



...and many more hotels for your best access stay in Osaka



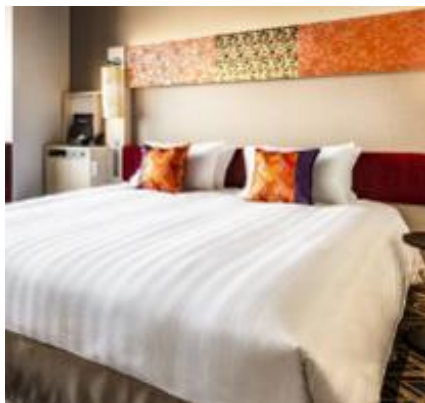
OSAKA SHIN-OSAKA

remm Shin-Osaka
296 guest rooms



OSAKA TOYONAKA

Senri Hankyu
Hotel Osaka
203 guest rooms



OSAKA FUKUSHIMA

Hotel Hanshin
Annex Osaka
254 guest rooms



OSAKA UMEDA

Hotel new Hankyu
Osaka Annex
302 guest rooms



**Get in touch
&
let us help you
with your journey**

mice@hankyu-hanshin-hotels.com

<https://www.hankyuhotel.com/en/group/mice>

**your
Hankyu Hanshin Hotels
MICE team**

Photo credits: © Tokyo Convention Visitors Bureau,
© Osaka Convention & Tourism Bureau, © Kobe Tourism Bureau